

The Central Visibility Manager (CVM) provides consolidated reporting and simplifies the management of multiple CGX Access appliances. Key features of CVM include:

Deployment Manager

The Deployment manager make it easy to selectively synchronize settings between appliances. Preferred settings can be quickly uploaded to multiple appliance(s) on-demand.

Transparent Device Roaming

CVM allows for trusted devices to roam between offices with a seamless end-user experience.

Centralized Management and Reporting

CVM also automates appliance backups and simplifies firmware \ update management.

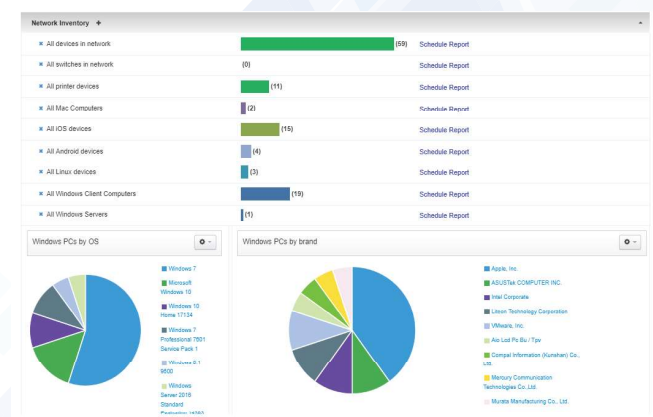
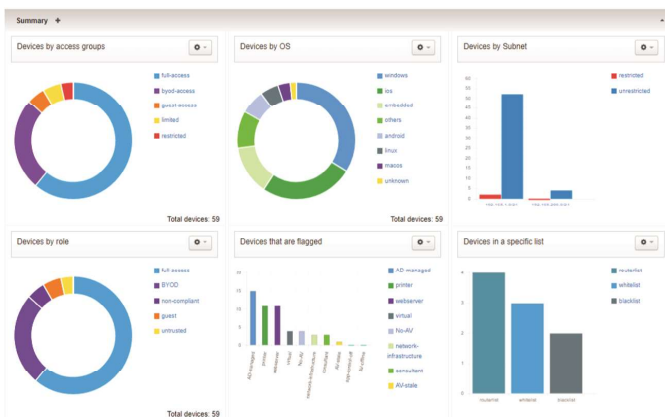
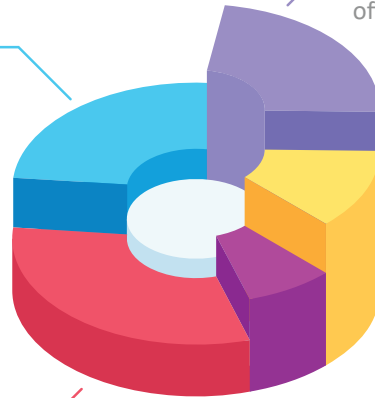
Reports from multiple appliances are consolidated and can be viewed as a whole or by regions.



Distributed License Management

CVM supports a flexible licensing model, where a single bulk license can be divided and shared between the different appliances. The customer can easily reallocate the licenses on-demand to match business requirements.

Administrative Privilege Management

With CVM, administrative privileges can be managed so regional IT staff only have administrative access to the appliances and functionality relevant to their roles.



	Physical Appliance		Virtual Appliance		
	CVM-5-HW, CVM-10-HW CVM-15-HW, CVM-25-HW	CVM-50-HW, CVM-100-HW CVM-150-HW, CVM-200-HW	CVM-VM		
Form Factor	Mini-1U	1U	Vmware ESX	Mirosoft Hyper-V	Nutanix AHV
Version			6.0 or above	2016 or above	6.0 or above
Maximum Appliances	25	200	200		
Maximum Devices	25,000	200,000	200,000		

Hardware Appliance Specification

	CVM-5-HW, CVM-10-HW CVM-15-HW, CVM-25-HW	CVM-50-HW, CVM-100-HW CVM-15-HW, CVM-200-HW
Form Factor	Mini-1U – Rack Mountable	1U – Rack Mountable
Height x Width x Depth	43mm x 254mm x 226mm	43mm x 437mm x 249mm
Input Votage	+12V DC - Power Adapter	100 - 240V AC ,50-60Hz
Power Configuration	ACPI Power Management Power-on mode for recovery from AC power loss	200W Low Noise AC-DC power supply with PFC 80 Plus Gold Certified
Temperature	Non-Operating Temperature: -40°C to 70°C (-40°F to 158°F)	
RoHS	RoHS Compliant	RoHS Compliant
Electromagnetic Emission	FCC Class A, EN 55022 Class A, EN 61000-3-2/-3-3, CISPR 22 Class A	FCC Class A, EN 55032 Class A, EN 61000-3-2/3-3, CISPR 32 Class A
Electromagnetic Immunity	EN 55024/CISPR 24, (EN 61000-4-2, EN 61000-4-3, EN 61000-4-4, EN 61000-4-5, EN 61000-4-6, EN 61000-4-8, EN 61000-4-11)	EN 55024/CISPR 24, (EN 61000-4-2, EN 61000-4-3, EN 61000-4-4, EN 61000-4-5, EN 61000-4-6, EN 61000-4-8, EN 61000-4-11), CNS14336-1, CNS13438, GB4943.1-2011, GB9254-2008(Class A) and GB17625.1-2012
Safety	CSA/EN/IEC/UL 60950-1 Compliant, UL or CSA Listed (USA and Canada), CE Marking (Europe)	

Virtual Appliances Requirements

	Virtual Appliances Requirements
Supported Hypervisor	VMware ESX, Microsoft Hyper-V, Nutanix AHV
Minimum Specs: 10 appliances	Dual Core CPU, 4 GB RAM
Minimum Specs: 25 appliances	Quad Core CPU, 8 GB RAM
Minimum Specs: 100 appliances	Quad Core CPU, 16 GB RAM
Minimum Specs: 200 appliances	Octa Core CPU, 32 GB RAM
Virtual Storage Capacity	20GB - 512GB